

Bringing the World
of Safety to the Surface



Global Surfacing
The World of Safety Surfaces

Bonded Rubber



Poured-In-Place



Our Ground Floor

Headquartered just outside of Atlanta, Georgia, Global Surfacing and its founders have over 40 years of combined experience in the playground safety surfacing industry. We understand your needs and what it takes to provide you with an attractive, safe and long lasting playground safety surface.

We specialize in all major types of unitary surfacing, including Poured-in-Place, Bonded Rubber and Synthetic Turf. We are committed to ensuring your kids have a safe, ADA compliant surface to fall back on as they play and exercise daily.

Our Installation Department handpicks and trains all of the installation crews that work with us. Our Research and Development Department constantly strives to improve existing products as well as develop new ones. Our Graphics Department can design and manufacture custom graphics in-house vs. in the field so you can always count on a more professional appearance. And our Service Department manufactures our own line of maintenance products to improve the appearance and extend the life of your unitary surfacing.

Start With the Right Foundation

If you know exactly what you want, great! If not, we'll work with you to help you evaluate your different options and choose the surfacing that will work best for your particular needs.

Please visit our website for site prep recommendations as well as product specifications, warranty information, colors and color combinations.



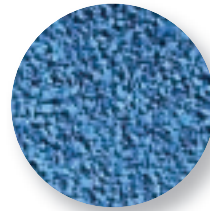
Typical Poured-In-Place Colors



Beige



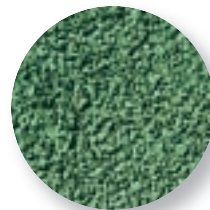
Beige/Black



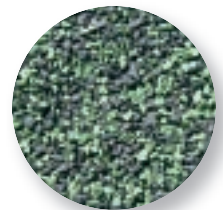
Blue



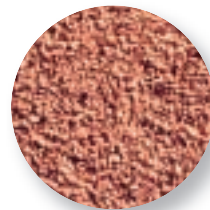
Blue/Black



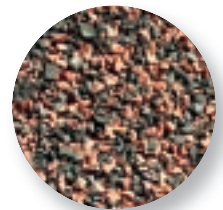
Green



Green/Black



Red



Red/Black

Poured-In-Place Great Looks That Last

Our Poured-in-Place surfacing is a two-layer system. The base (or impact) layer is comprised of black 100% post-consumer recycled Styrene Butadiene Rubber (SBR) encapsulated with urethane binder. The cap (or wear) layer is comprised of colored Ethylene Propylene Diene Monomer (EPDM) rubber also encapsulated with urethane binder.

We use more urethane binder per square foot than most manufactures and our EPDM caps are a full 1/2" thick.





Typical Bonded Rubber and NexGen Bonded Rubber Colors



Brown



Red



Green



Blue



Sandstone



Red/Green/Sandstone

Bonded Rubber

More Bounce for Your Buck

Bonded Rubber is extremely durable and is one of the most affordable unitary surfaces on the market today.

Similar to Poured-in-Place, Bonded Rubber is a combination of colored 100% post-consumer recycled SBR rubber and urethane binder that is mixed and poured onsite. However, unlike Poured-in-Place, Bonded Rubber is a one-layer system, which saves you time and money.

The SBR "buffings" are larger than those used in Poured-in-Place systems and are more flexible than EPDM. This results in a system that drains very quickly and holds up well to daily thermal expansion and contraction.

Bonded Rubber is also popular for walking trails and running paths.

NexGen Bonded Rubber

Even More Bounce for Your Buck

NexGen Bonded Rubber is the next step in Bonded Rubber design. This patent pending system has the same look and feel of Bonded Rubber but is more cost effective at higher fall heights. It also provides a more consistent HIC rating for a longer period of time than either Poured-in-Place or Bonded Rubber.







Artificial Turf The Turf is Always Greener

Artificial Turf is a high performance synthetic grass surface perfect for high performance athletic facilities (indoor and outdoor) as well as playground and play areas that require minimal fall protection. Best of all, it's durable and long lasting and is the ideal choice for commercial and residential landscaping, dog parks, decks, patios and golf putting greens.

Using our Artificial Turf gives the look of natural grass without all the maintenance. It resists wear and tear from foot traffic and the elements. The surface allows free flow of water too, so the surface can be used right after a rainstorm.

Graphics Make Your Mark

At Global Surfacing we can design and manufacture our graphics in-house as well as in the field. This allows us to take anything from a "back of the napkin sketch" to a detailed CAD file and transform it into amazing, eye catching graphics. From a simple hopscotch to your school mascot, if you can draw it, we can make it. These graphics are not stickers applied to your surfacing, but are full color, 100% rubber objects that are imbedded in the playground safety surface.



Maintenance

Roll Coats

Although Poured-in-Place and Bonded Rubber are often sold as “no maintenance” products, they are actually “lower maintenance” products. No playground safety surfacing is totally maintenance free. The sun’s rays, weather and foot traffic all take their toll over time. That is why we recommend periodically applying a urethane replacement roll coat. You will be amazed at how a roll coat can bring your faded and dried surface back to life.

We believe in the value of roll coating so much, that we will extend the warranty of your surfacing as long as the surfacing was originally installed by us and you subscribe to our Life Extension Program.

Roll coating your playground is like applying protectant to the dashboard of your car or applying leather conditioner to its seats. The more you take care of these surfaces, the longer they will last.

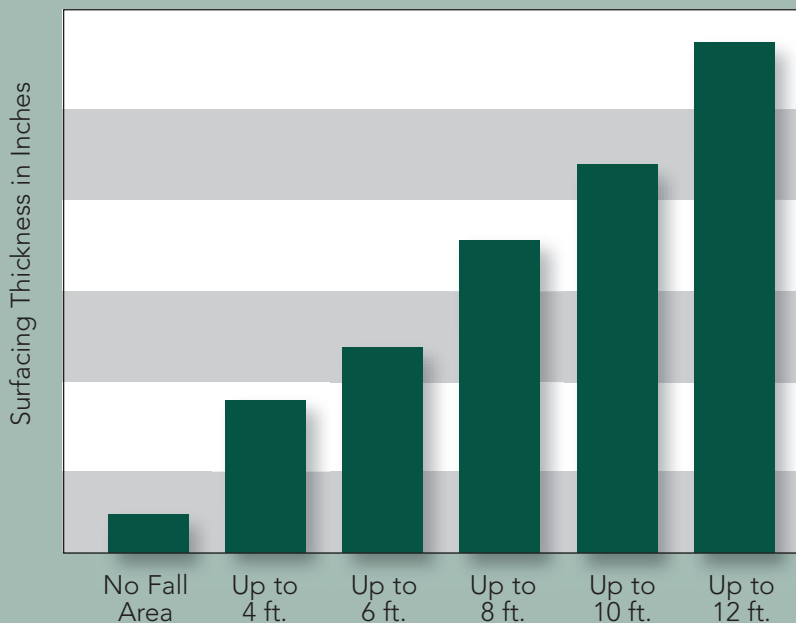
Patch Kits

Over time, wear spots may develop in high traffic areas. When they do, you might want to consider using a patch kit. This will allow you to address a small problem before it becomes a large one. Our patch kits are packaged in five-gallon pails and include pre-measured amounts of rubber and binder. All you need to do is mix the ingredients and apply the patch. Instructions are included as well as phone support.



Safety

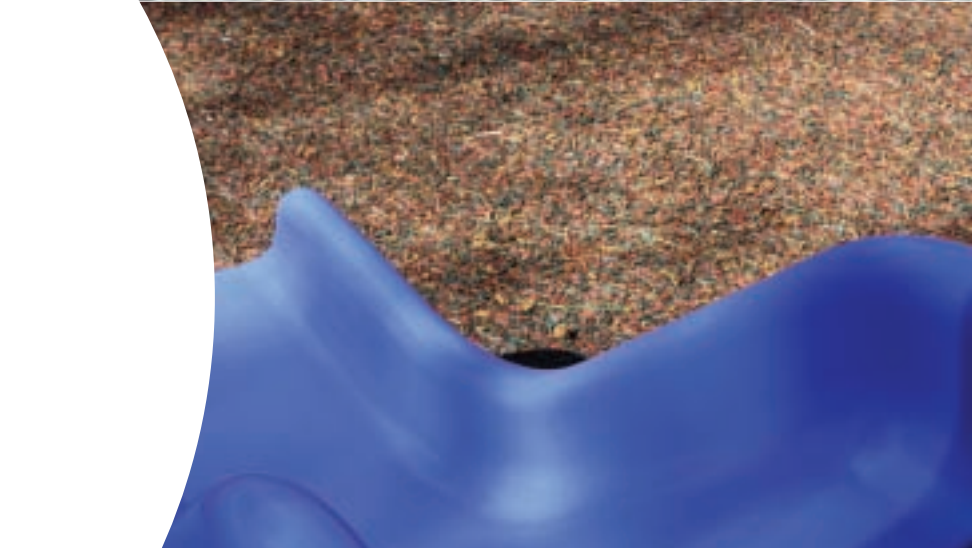
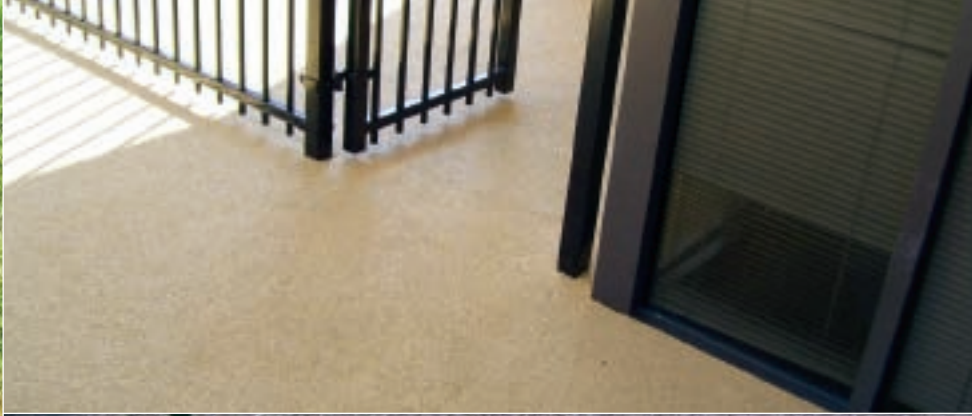
Critical Fall Height



Service

Support from the Ground Up

All of our playground safety surfacing products are designed and manufactured with long-term performance in mind. No matter which system you select from us, you can be assured that safety, quality and customer satisfaction are our highest priorities. All of our playground safety surfacing products include a written warranty and we are always here to support you before, during and after the job is complete.



Global Surfacing

The World of Safety Surfaces

Global Surfacing, Inc.
PO Box 1429
Woodstock, GA 30188
Tel 1-866-673-5838
Fax 1-866-673-5839
www.globalsurfacing.com