

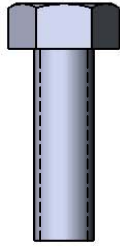
# Site Amenities

BY SUPERIOR RECREATIONAL PRODUCTS

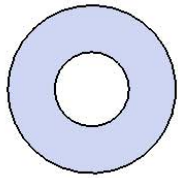


Model # B10PLAYERINNVS

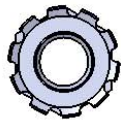
# HARDWARE



5/16" x 1"  
Machine Bolt



5/16" Washer



5/16" Keeplow Nut

# PRODUCT SPECIFICATIONS

## **B10PLAYERINNVS DELUXE SEAT PORTABLE BENCH WITHOUT BACK**

Seats & Back: 11 gauge die formed angle frame 1"x1-7/8" with 3" radius corners. 12 gauge sheet steel is precision punched with a 5/8" hole. 7 gauge x 1-1/2" flat bar center support and mounting bracket understructure. Electrically MIG welded.

Coating: Oven fused functionalized polyethylene copolymer-based thermoplastic. Fluidized bed coating application with superior mechanical performance, impact resistance and UV-stability.

Frame: 2-3/8" O.D. x 12 gauge pre-galvanized structural steel tubing. Tube ends are pre-galvanized steel capped. Seat mounting points are 7 gauge x 1-1/2" die stamped steel flat bar. All electrically MIG welded.

Frame Coating: Electrostatic powder coated application oven cured.

Hardware: All stainless steel hardware fasteners.

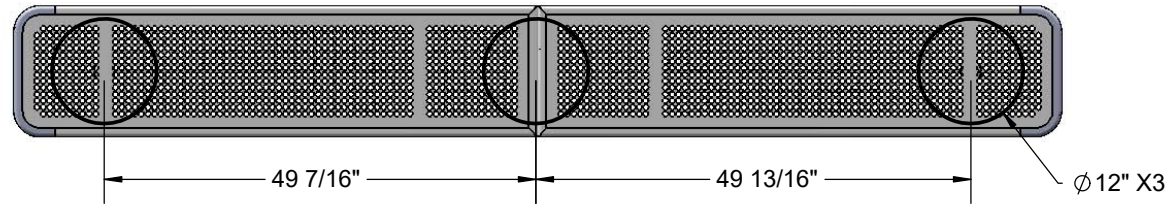
Dimensions: 10' bench inground without back. Deluxe seats 15" wide x 120" long. Seat height is 18".

# COMPONENTS

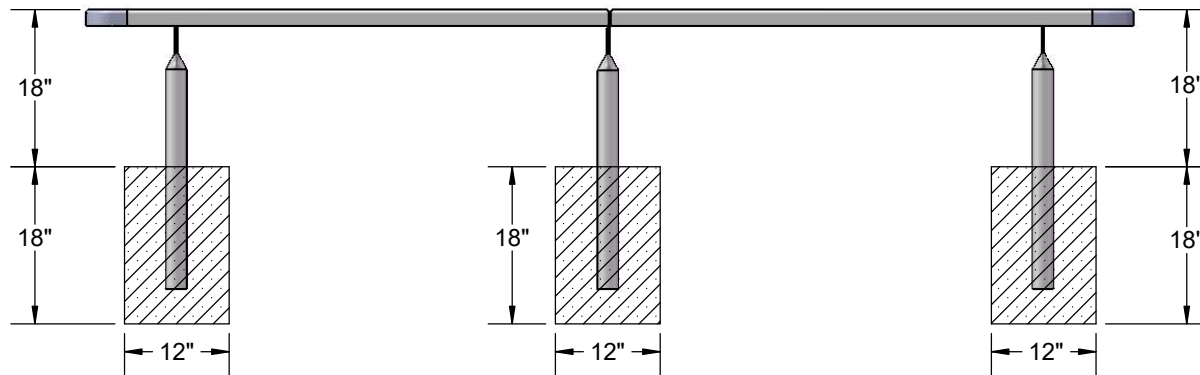


ITEM NO.	PartNo	DESCRIPTION	QTY
1	T-DP60-S	10' Deluxe Punched Seat (1/2)	2
2	P-V942S	942S VINYL LEG	3
3	33-02-0007	5/16" SS Washer	12
4	33-05-0029	5/16" x 1" Machine Bolt (SS)	6
5	33-03-0012	5/16" Kep Nut (SS)	6

# FOOTINGS



Estimated Required Concrete:  
10 - 50lb Bags of Concrete Mix



# OVERALL DIMENSIONS

