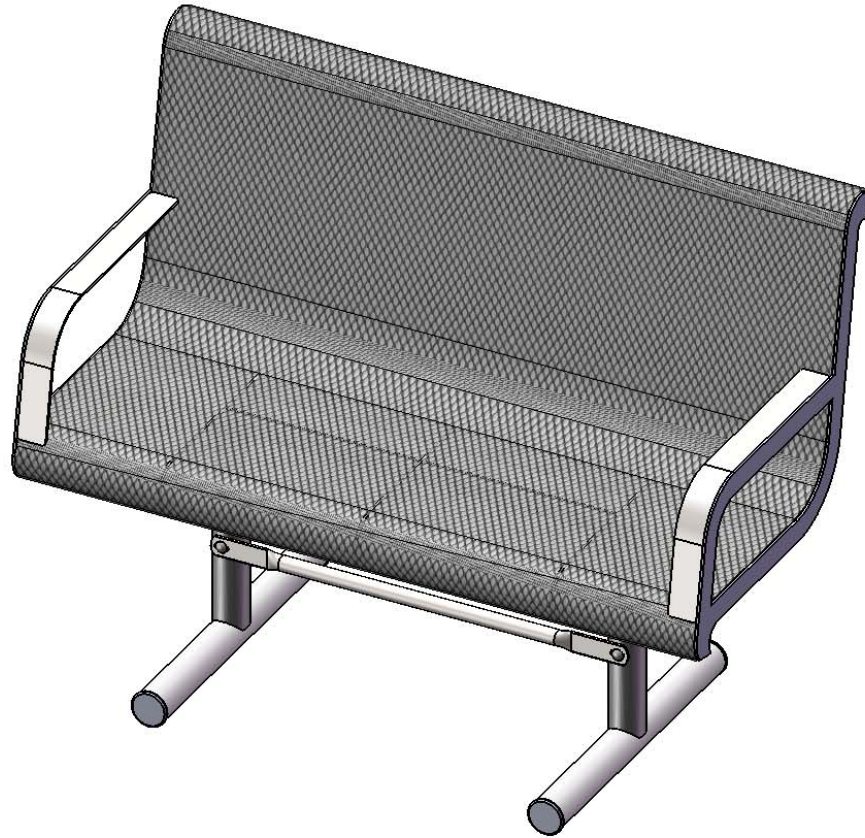


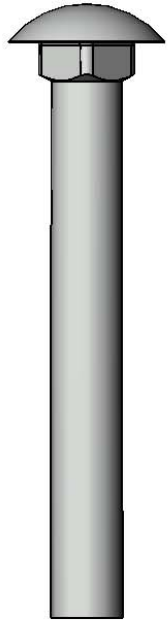
# Site Amenities

BY SUPERIOR RECREATIONAL PRODUCTS

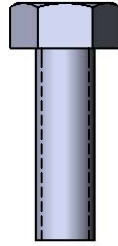


Model # B4WBWINGLINEP

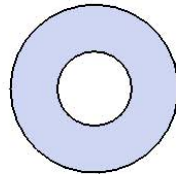
# HARDWARE



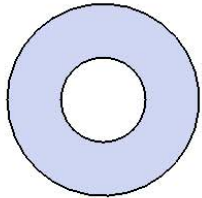
3/8" x 3"  
Carriage Bolt



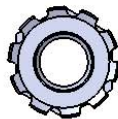
5/16" x 1"  
Machine Bolt



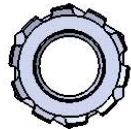
5/16" Washer



3/8" Washer



5/16" Kep Nut



3/8" Kep Nut

# PRODUCT SPECIFICATIONS

## **B4WBWINGLINEP PORTABLE CONTOURED BENCH WITH BACK**

**Seats:** Seats dimensions are 24-3/4" x 48-3/8". 3/4" #9 steel expanded metal. End plates are made of 10 gauge flat steel plate. Reinforced with 3/16 x 1-1/2" flat strip. Armrest are made from 7ga steel plate. Electrically MIG welded.

**Coating:** Oven fused functionalized polyethylene copolymer-based thermoplastic. Fluidized bed coating application with superior mechanical performance, impact resistance and UV-stability.

**Frame:** Legs are 2-3/8" O.D. x 12 gauge pre-galvanized structural steel tubing. Tube ends are pre-galvanized steel capped. Seat mounting points are 10 gauge x 1-1/2" die stamped steel flat bar. All electrically MIG welded.

**Frame Coating:** Electrostatic powder coated application oven cured.

**Hardware:** All hardware shall be stainless steel.

**Dimensions:** 4' portable bench with back. Seats are 24-3/4" wide x 48-3/8" long. Seat height is 18-1/8" from the ground to the top of the seat. The overall dimensions are 48-3/8" x 24-3/4" x 37-5/16".

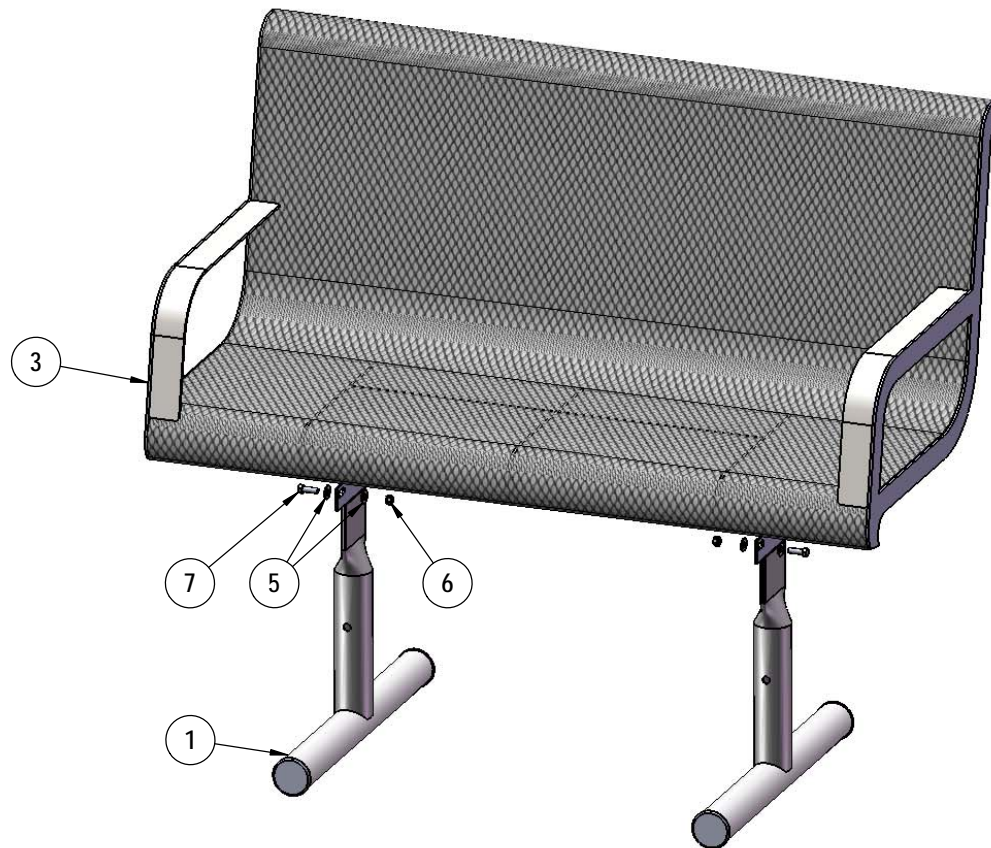
# COMPONENTS



ITEM NO.	PartNo	DESCRIPTION	Qty.
1	P-V942P	942P Vinyl Leg	2
2	P-04-04-0018	29 1/2" brace	1
3	T-01-01-0709	963 4' Expanded Seat	1
4	33-06-0058	3/8" x 3" Carriage Bolt (SS)	2
5	33-02-0007	5/16" SS Washer	8
6	33-03-0012	5/16" Kep Nut (SS)	4
7	33-05-0029	5/16" x 1" Machine Bolt (SS)	4
8	33-02-0008	3/8" Flat Washer (SS)	2
9	33-03-0013	3/8" Kep Nut (SS)	2

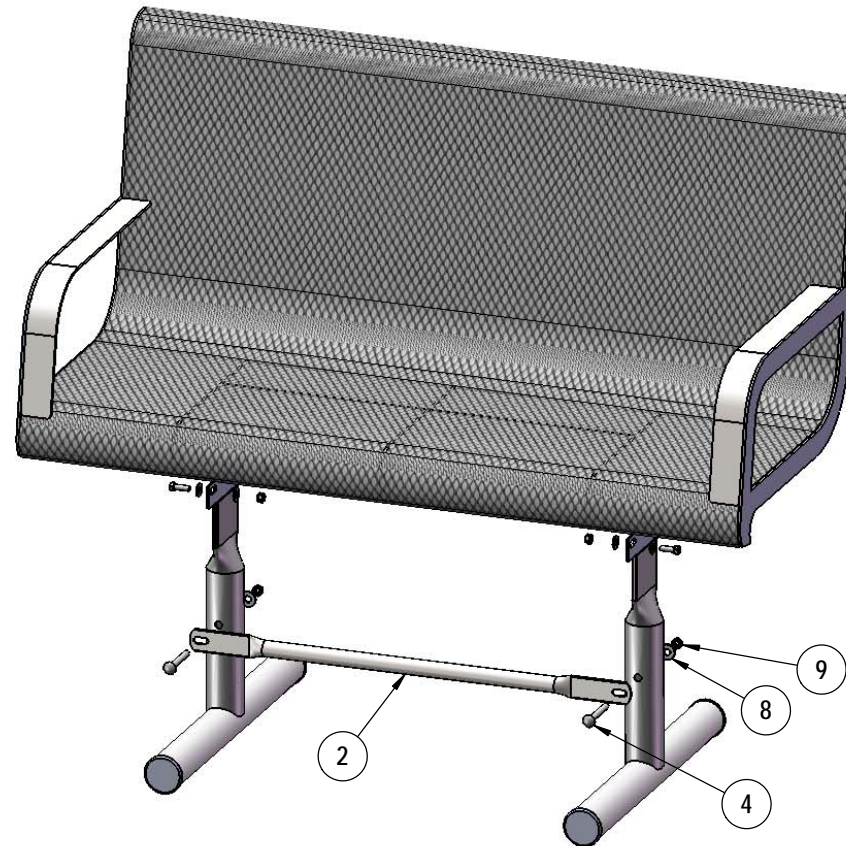
# STEP 1

Attach the 4' Seat to the Legs using specified hardware.



## STEP 2

Attach the 29-1/2" Brace to both legs using specified hardware.



# OVERALL DIMENSIONS

