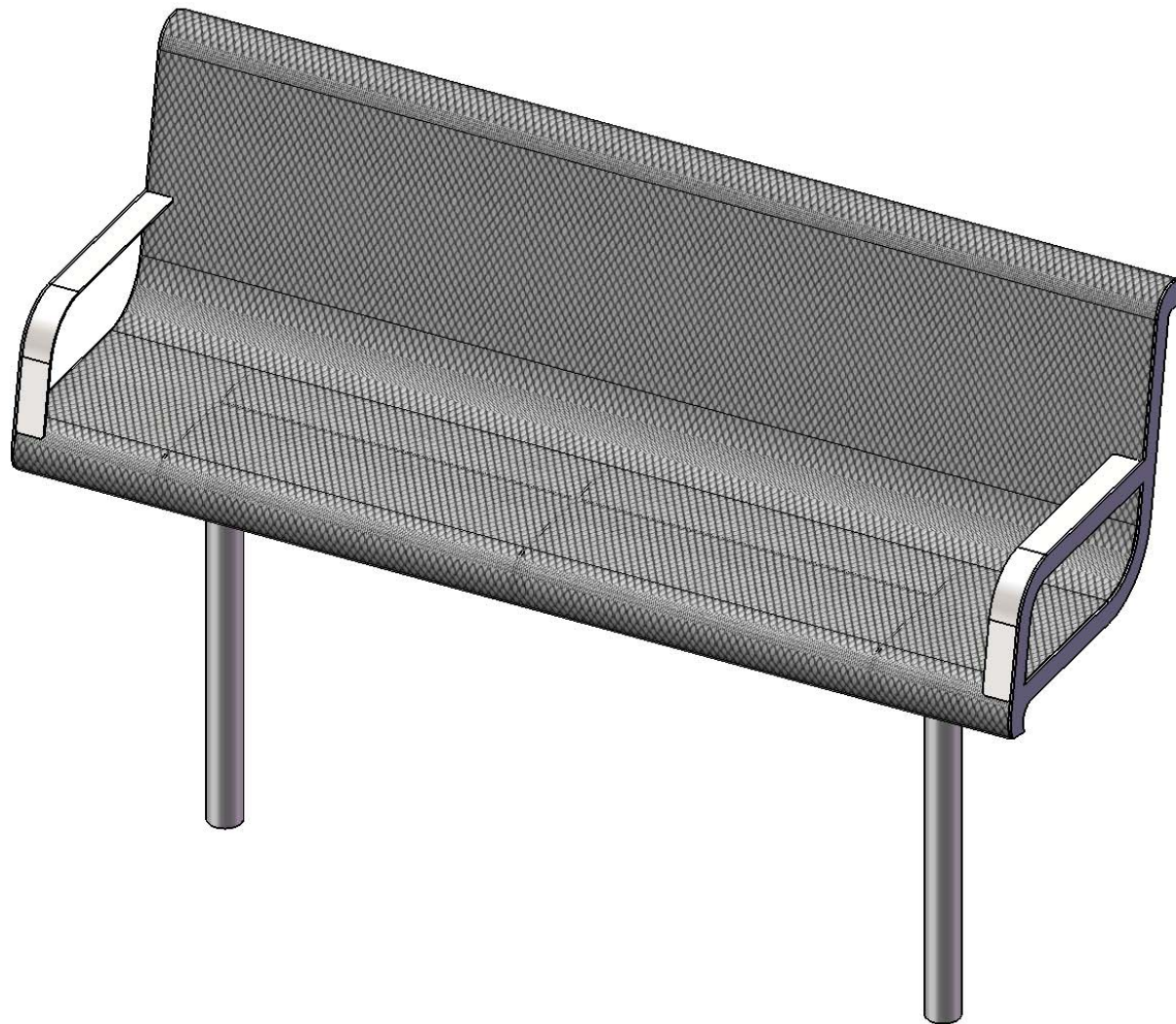


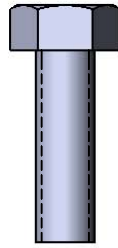
Site Amenities

BY SUPERIOR RECREATIONAL PRODUCTS

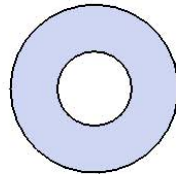


Model # B6WBWINGLINES

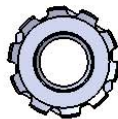
HARDWARE



5/16" x 1"
Machine Bolt



5/16" Washer



5/16" Kep Nut

PRODUCT SPECIFICATIONS

B6WBWINGLINES IN-GROUND CONTOURED BENCH WITH BACK

Seats: Seats dimensions are 23-3/4" x 72-3/8". 3/4" #9 steel expanded metal. End plates are made of 10 gauge flat steel plate. Reinforced with 3/16 x 1-1/2" flat strip. Armrest are made from 7ga steel plate. Electrically MIG welded.

Coating: Oven fused functionalized polyethylene copolymer-based thermoplastic. Fluidized bed coating application with superior mechanical performance, impact resistance and UV-stability.

Frame: Legs are 2-3/8" O.D. x 12 gauge pre-galvanized structural steel tubing. Seat mounting points are 10 gauge x 1-1/2" die stamped steel flat bar. All electrically MIG welded.

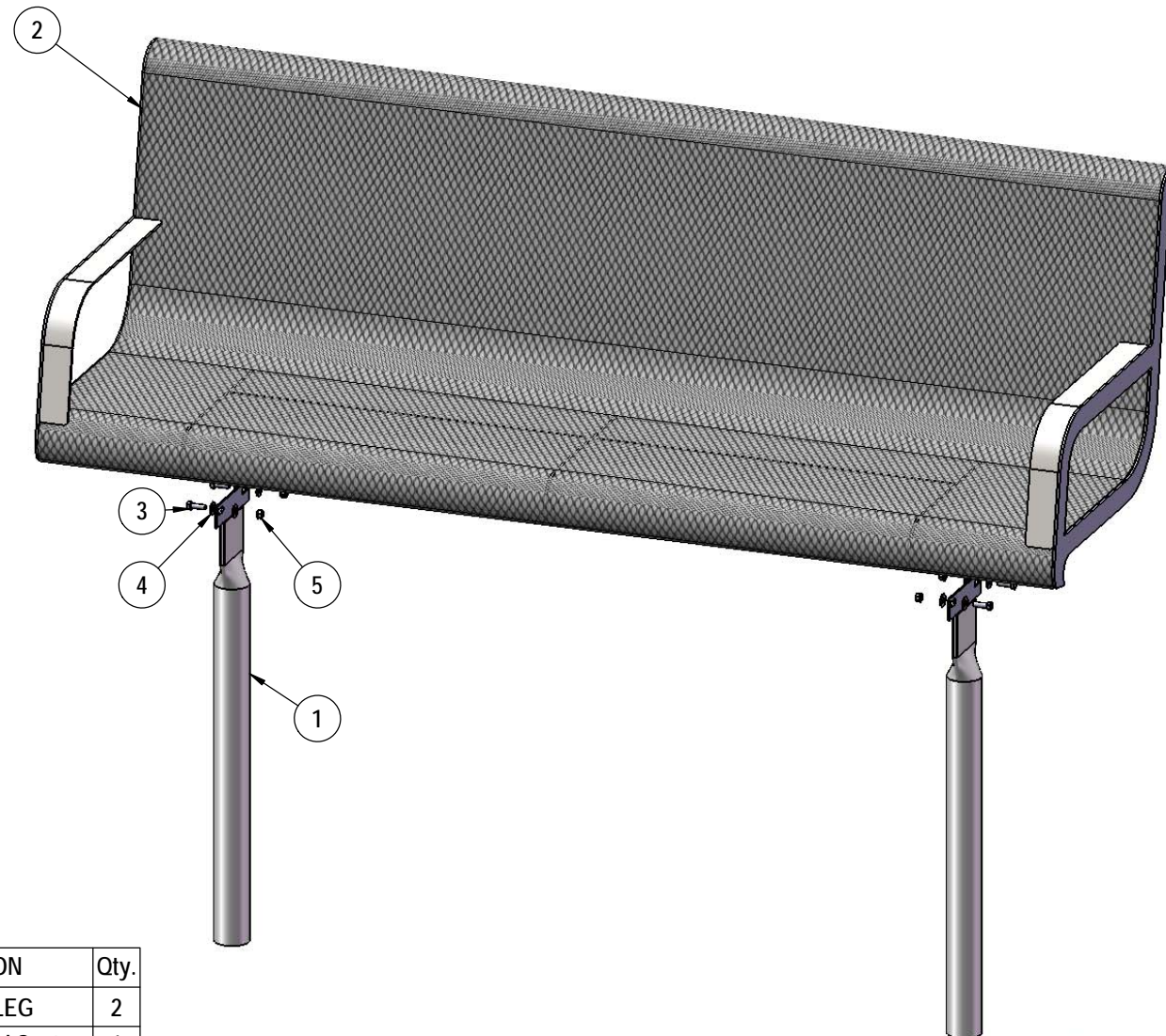
Frame Coating: Electrostatic powder coated application oven cured.

Hardware: All hardware shall be stainless steel.

Dimensions: 4' In-Ground bench with back. Seats are 23-3/4" wide x 72-3/8" long. Seat height will be 18" from the ground. The overall dimensions are 72-3/8" x 23-3/4" x 51".

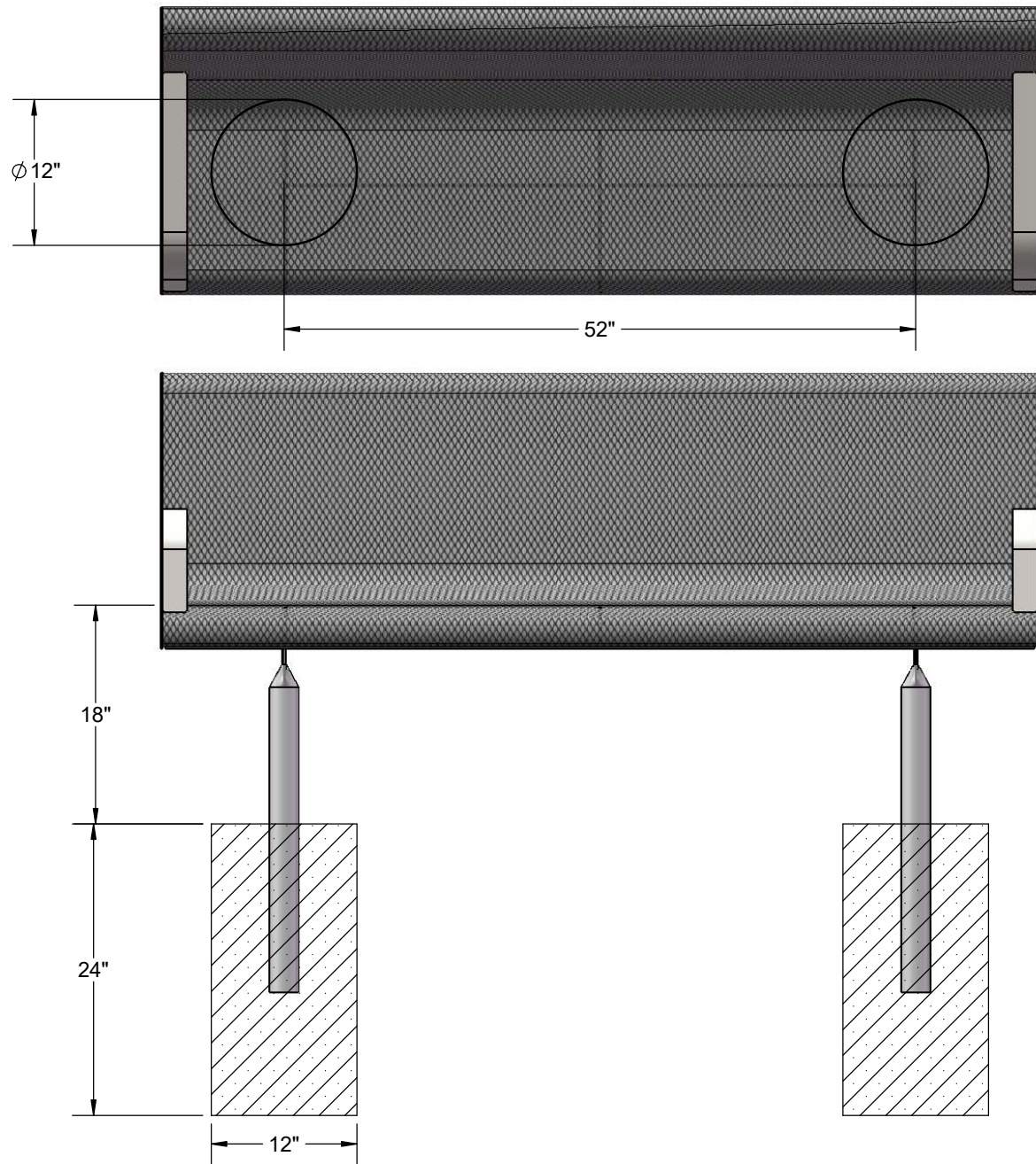
COMPONENTS

Attach the In-Ground Legs to the 6' Seat using the specified hardware.



ITEM NO.	PartNo	DESCRIPTION	Qty.
1	P-V942S	942S VINYL LEG	2
2	T-01-01-0708	963 6' Exapnded Seat	1
3	33-05-0029	5/16" x 1" Machine Bolt (SS)	5
4	33-02-0007	5/16" SS Washer	9
5	33-03-0012	5/16" Kep Nut (SS)	5

FOOTINGS



Estimated Required Concrete:
11 - 50lb Bags of Concrete Mix

OVERALL DIMENSIONS

