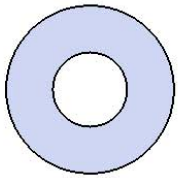


Model # T10RC4-4SM

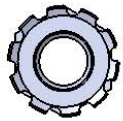
HARDWARE



5/16" x 1"
Machine Bolt



5/16" Washer



5/16" Washer

PRODUCT SPECIFICATIONS

T10RC4-4SM WALK THROUGH SURFACE MOUNT TABLE

Seat & Back: 2" x 2" x 1/8" formed angle frame with 1-1/2" radius corners. 3/4" #9 steel expanded metal. 7 gauge x 1-1/2" flat bar center support and mounting bracket understructure. Electrically MIG welded.

Coating: Oven fused functionalized polyethylene copolymer-based thermoplastic. Fluidized bed coating application with superior mechanical performance, impact resistance and UV-stability.

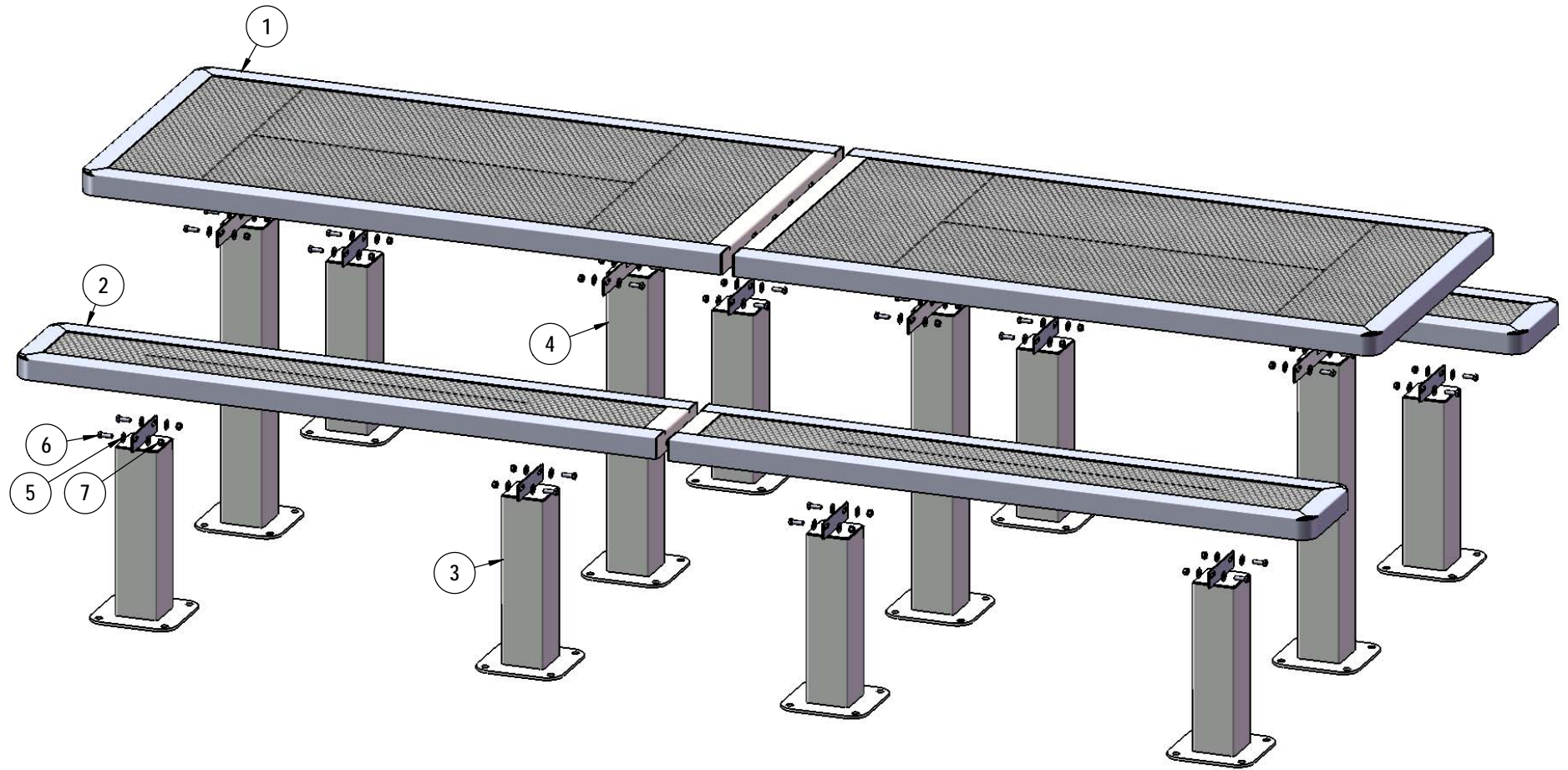
Frame: 4 x 4 x 11 gauge structural steel square tubing. Legs are capped with a 4 x 4 x 3/16" steel flat bar. Seat and top mounting points 7 gauge x 1-1/2" die stamped steel flat bar. All electrically MIG welded.

Frame Coating: Electrostatic powder coated application oven cured.

Hardware: All stainless steel hardware fasteners.

Dimensions: Each top is 30" wide x 60-1/8" long x 29-15/16" high. Seats are 10" wide x 60-1/8" long x 18-3/16" high. Outside to outside dimensions are 62" x 120-1/4".

COMPONENTS

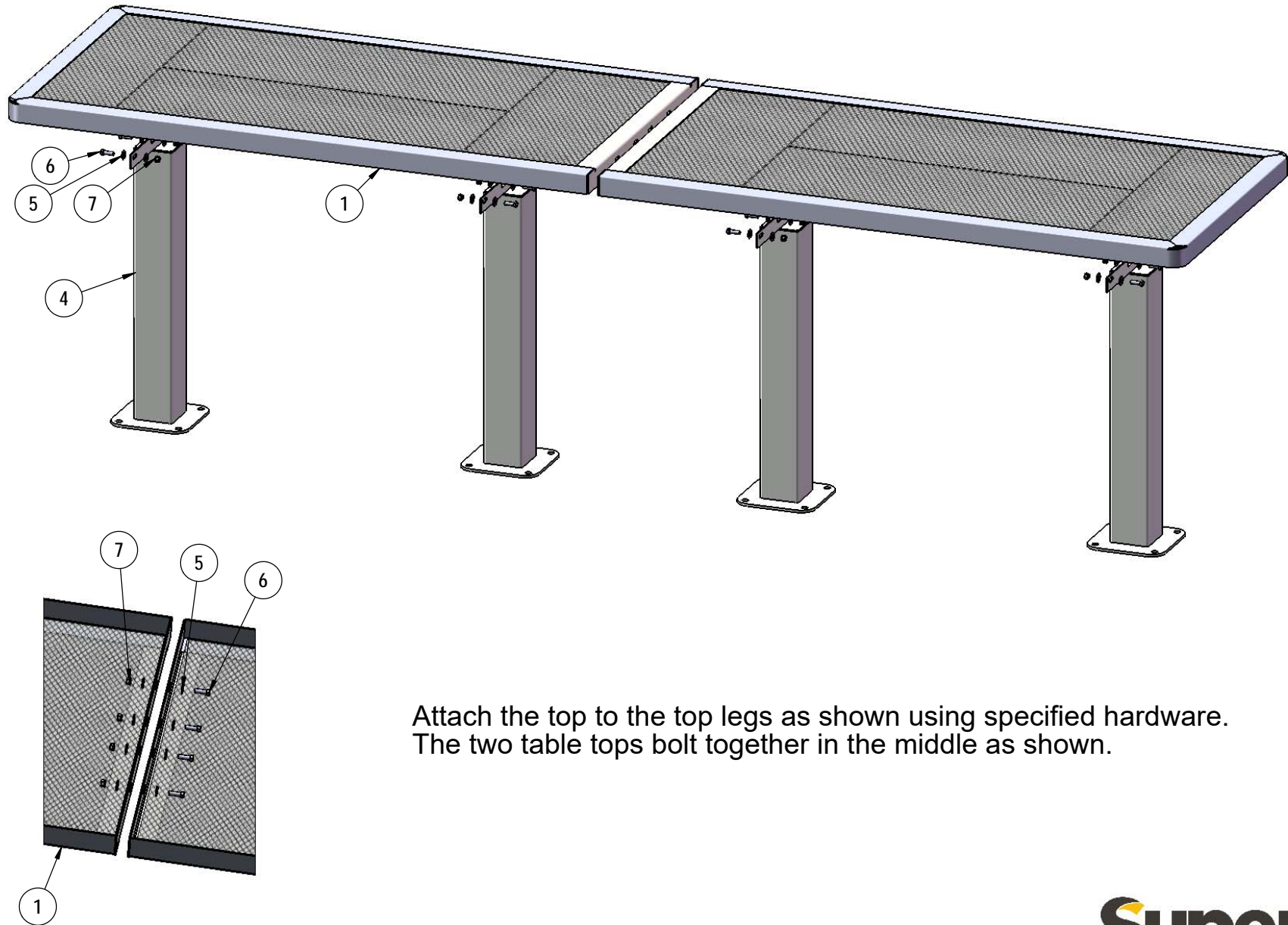


Required Surface Mount Hardware:
 3/8" x 3-1/2" Concrete Expansion Anchor Bolts
 (Not Included)

ITEM NO.	PartNo	DESCRIPTION	QTY
1	RC60-T	5' regal expanded top (1/2)	2
2	RC60-S	5' x 10" wide regal expanded seat (1/2)	4
3	P-V349SM-S	Vinyl SM seat leg	8
4	P-V349SM-T	Vinyl SM top leg	4
5	33-02-0007	5/16" SS Washer	80
6	33-05-0029	5/16" x 1" Machine Bolt (SS)	40
7	33-03-0012	5/16" Kep Nut (SS)	40

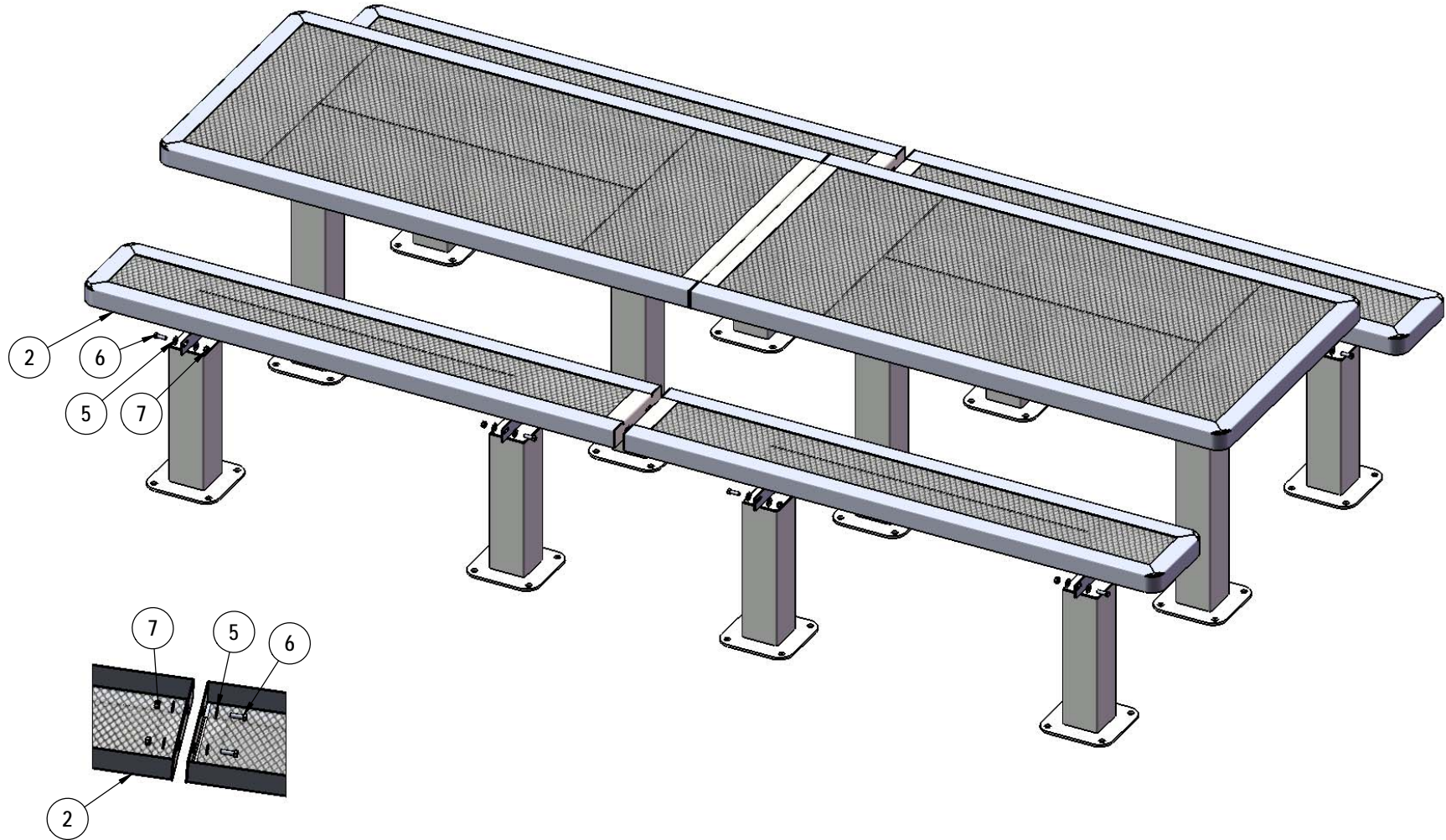
Superior[®]
 RECREATIONAL PRODUCTS
A PLAYCORE Company

STEP 1



Attach the top to the top legs as shown using specified hardware.
The two table tops bolt together in the middle as shown.

STEP 2



Attach the seats to the seat legs as shown using specified hardware.
Two seat planks bolt together in the middle as shown.

OVERALL DIMENSIONS

