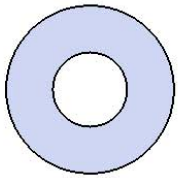


Model # T8RC4-4S

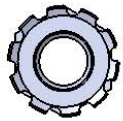
HARDWARE



5/16" x 1"
Machine Bolt



5/16" Washer



5/16" Washer

PRODUCT SPECIFICATIONS

T8RC4-4S WALK THROUGH INGROUND MOUNT TABLE

Seat & Back: 2" x 2" x 1/8" formed angle frame with 1-1/2" radius corners. 3/4" #9 steel expanded metal. 7 gauge x 1-1/2" flat bar center support and mounting bracket understructure. Electrically MIG welded.

Coating: Oven fused functionalized polyethylene copolymer-based thermoplastic. Fluidized bed coating application with superior mechanical performance, impact resistance and UV-stability.

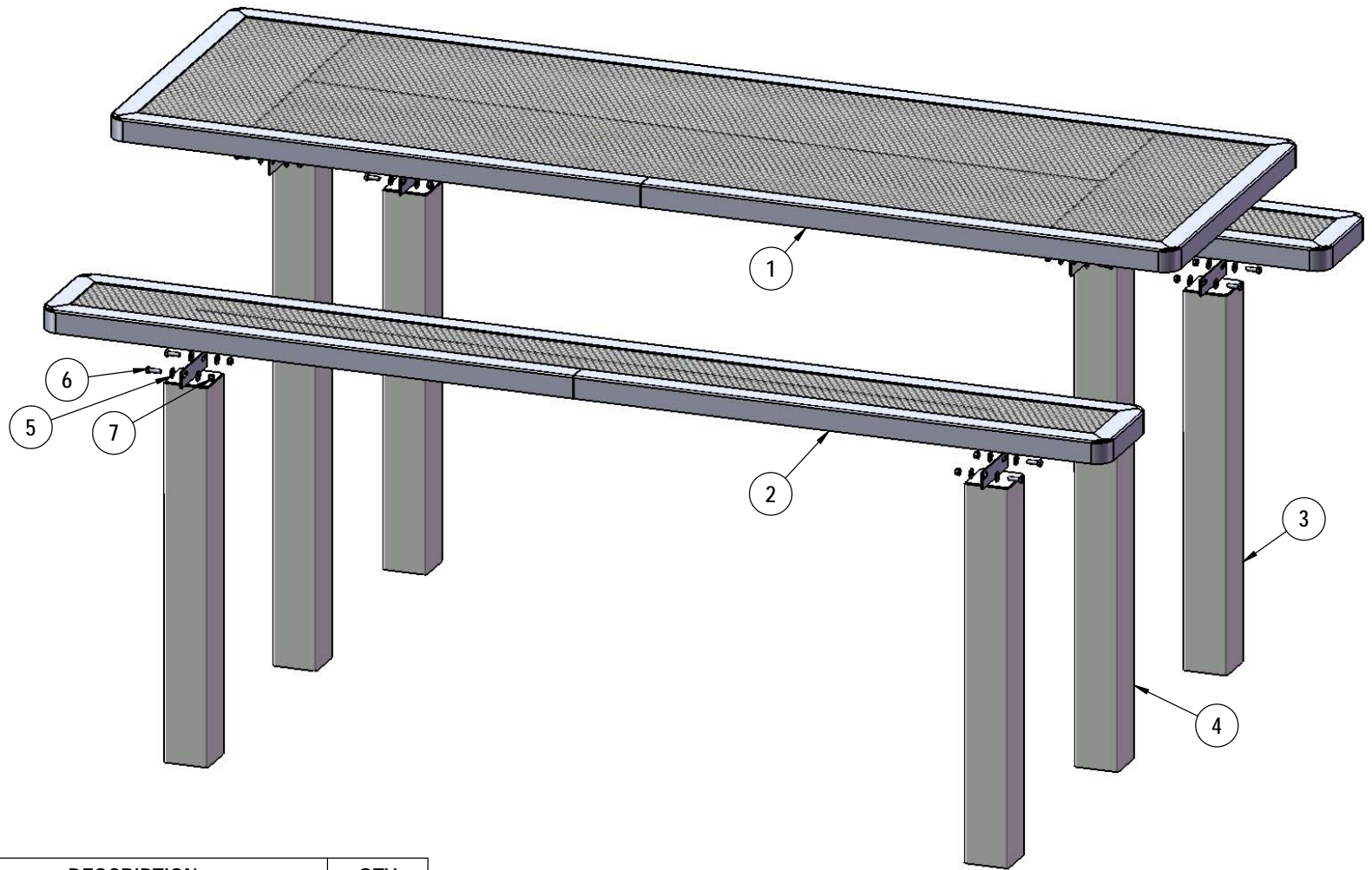
Frame: 4 x 4 x 11 gauge structural steel square tubing. Legs are capped with a 4 x 4 x 3/16" steel flat bar. Seat and top mounting points 7 gauge x 1-1/2" die stamped steel flat bar. All electrically MIG welded.

Frame Coating: Electrostatic powder coated application oven cured.

Hardware: All stainless steel hardware fasteners.

Dimensions: Top is 30" wide x 96" long x 30" high. Seats are 10" wide x 96" long x 18-3/16" high. Outside to outside dimensions are 62" x 96".

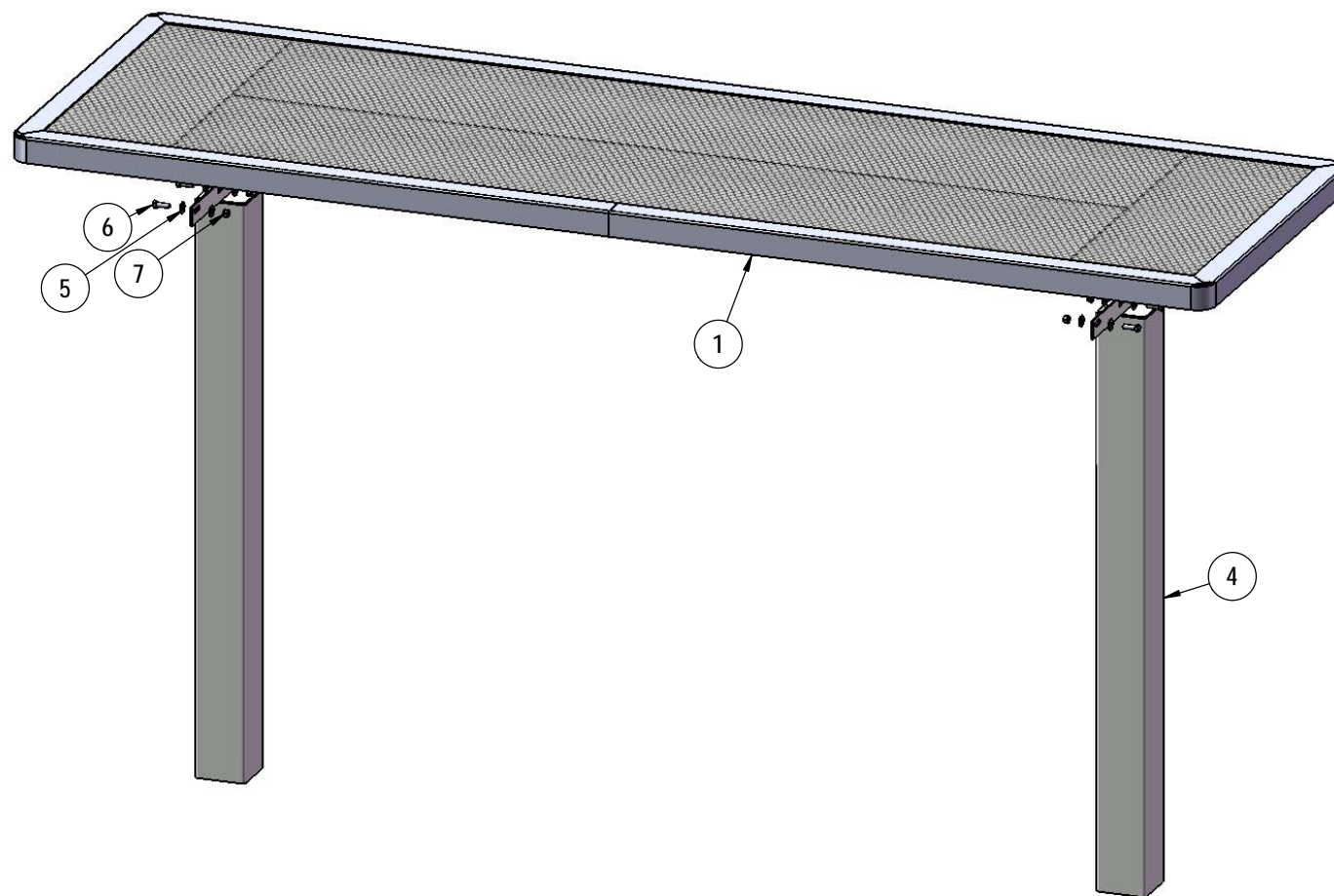
COMPONENTS



ITEM NO.	PartNo	DESCRIPTION	QTY
1	RC96-T	8' regal expanded top	1
2	RC96-S	8' long x 10" wide regal expanded seat	2
3	P-V349S-S	Vinyl S Seat leg	4
4	P-V349S-T	Vinyl S top leg	2
5	33-02-0007	5/16" SS Washer	32
6	33-05-0029	5/16" x 1" Machine Bolt (SS)	16
7	33-03-0012	5/16" Kep Nut (SS)	16

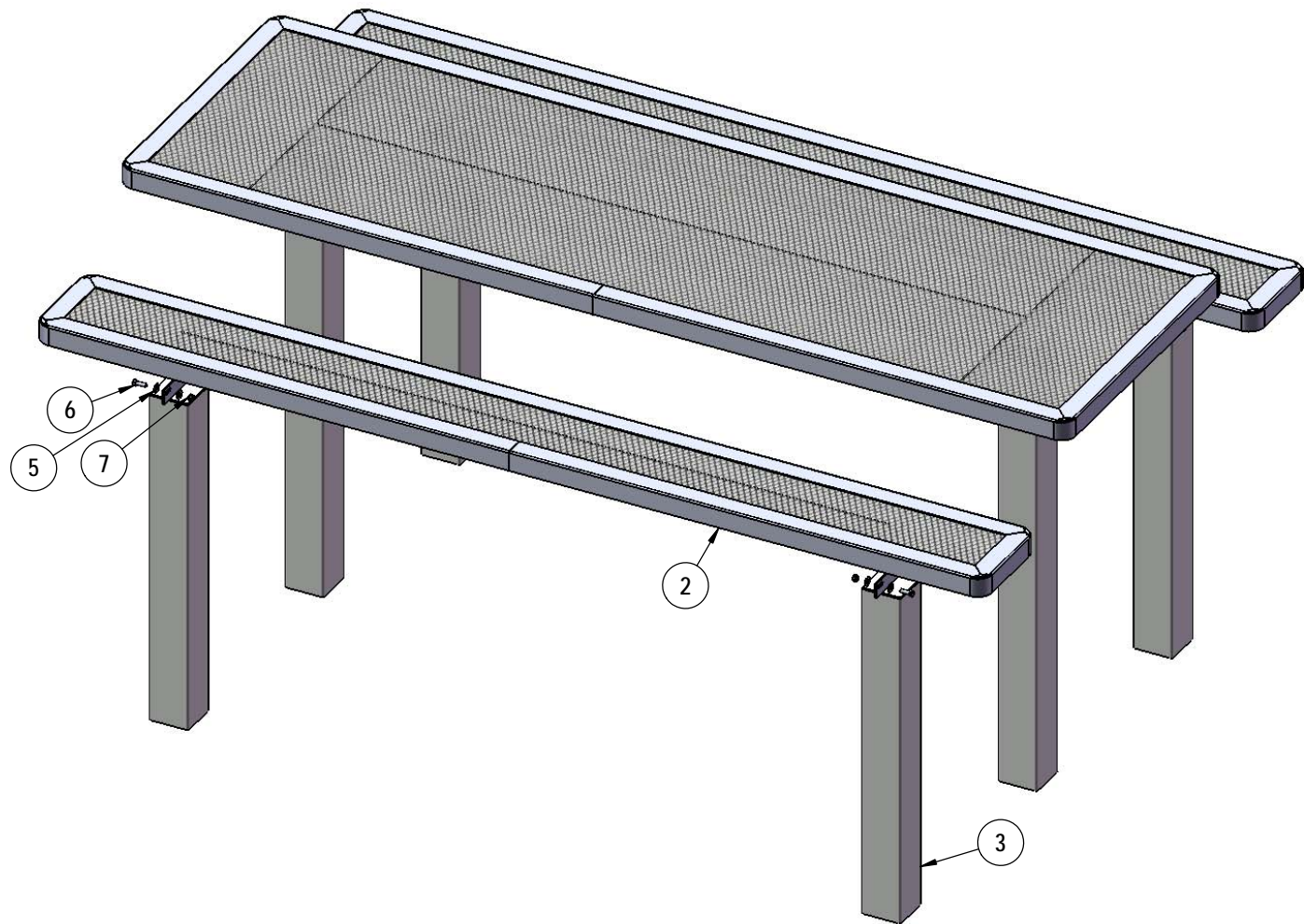
Superior[®]
 RECREATIONAL PRODUCTS
A PLAYCORE Company

STEP 1



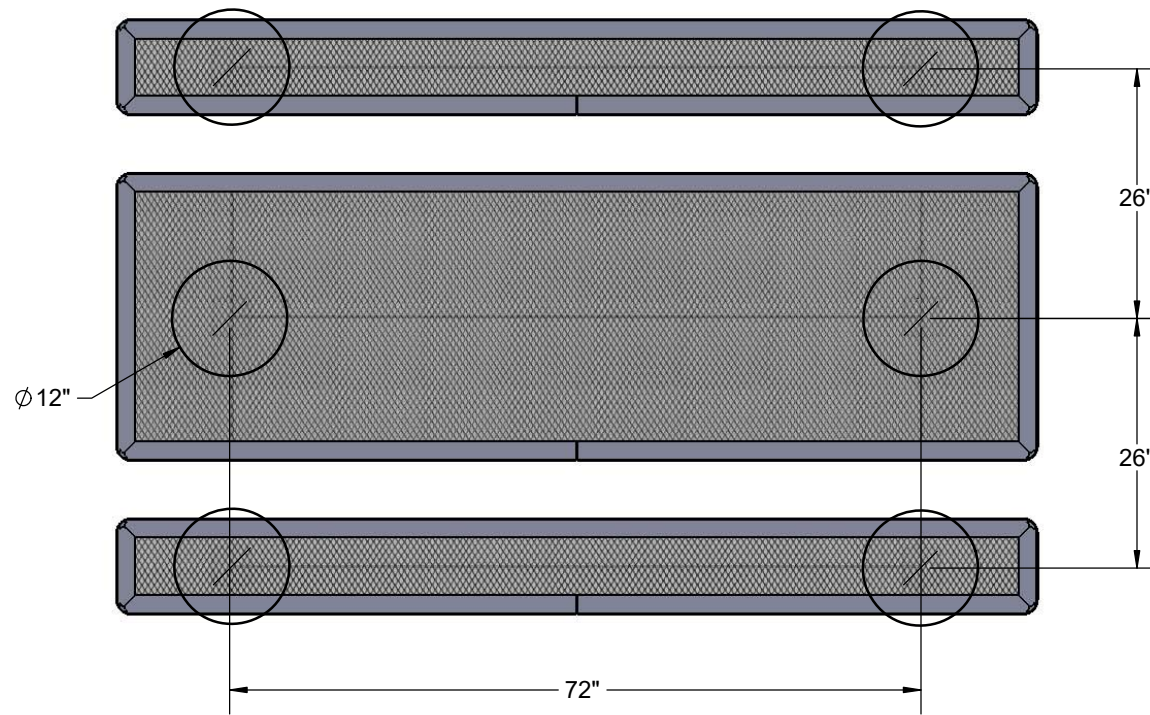
Attach the top to the top legs as shown using specified hardware.

STEP 2

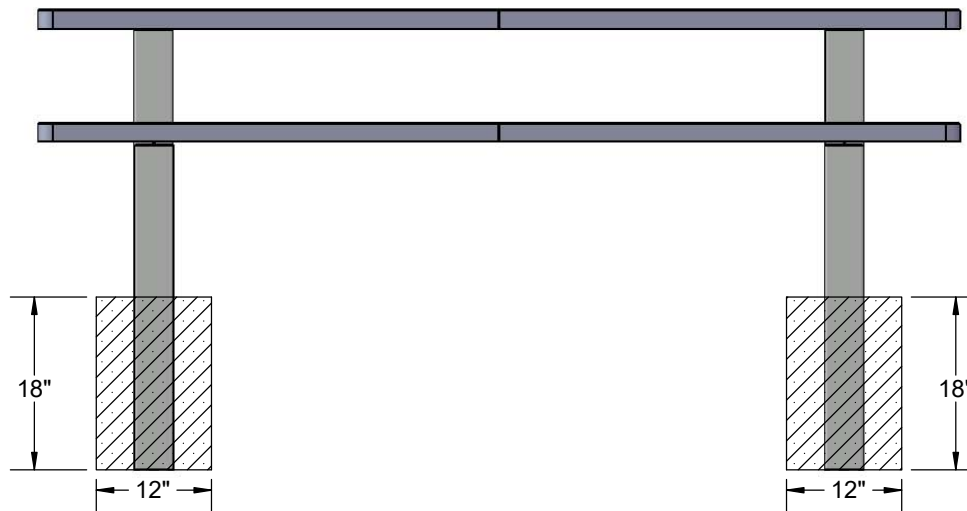


Attach the seats to the seat legs as shown using specified hardware.

STEP 2



Estimated Required Concrete:
19 - 50 lb Bags of Concrete Mix



OVERALL DIMENSIONS

